

Three Person Long Switches

LEAD OFFICIAL

Illegal Screen / Player Control Foul Table Side

- Lead brings it out, reports, then goes long to new lead
- Trail goes to baseline as Trail to administer throw in
- Center stays in Center Opposite Table

Illegal Screen / Player Control Opposite Table Side

- Lead brings it out, reports, then goes to Center on Table Side
- Trail goes Long to become New Lead
- Center goes to administer throw in as new Trail

Rebounding Foul by Offensive Team going Long Opposite Table Side

- Lead brings out foul to reporting area & returns to administer throw in
- Trail goes down the floor to become New Lead
- Center stays Center on Table Side

Rebounding Foul by Offensive Team going Long on Table Side

- Lead brings out the foul, reports to table & goes back to administer throw in
- Trail goes down the floor to become New Lead
- Center remains Center opposite Table

TRAIL OFFICIAL

Illegal Screen / Player Control Foul Table Side

- Trail reports foul in reporting area then becomes New Lead Table Side
- Lead administers Throw In Table Side Line or Baseline
- Center remains Center opposite Table

Illegal Screen / Player Control Foul Opposite Table Side

- Trail reports foul in reporting area then goes back to opposite table sliding down to New Lead still opposite table
- Lead administers throw in on baseline or sideline Opposite table
- Center remains Center on Table Side

CENTER OFFICIAL

Illegal Screen / Player Control Table Side

- Center reports foul in reporting area moves down to New Lead Table Side
- Lead moves over to administer throw in on baseline or sideline as New Trail
- Trail stays opposite table and becomes New Center Opposite

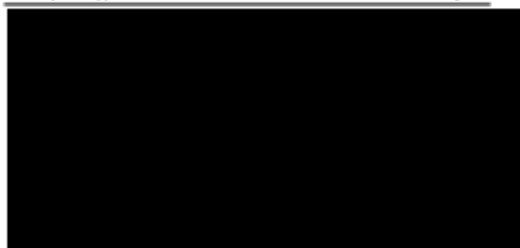
Illegal Screen / Player Control Opposite Table Side

- Center reports foul in reporting area and stays opposite table but slides down to become New Lead opposite table
- Lead moves over opposite to administer throw in on baseline or sideline
- Trail becomes New Center on Table Side

NOTE:

If you are Trail or Center Opposite Table you report and STAY OPPOSITE

Only 1 times we have a True Long Switch & that is when Lead has a foul going long on Table Side



5. A foul in the backcourt going to the frontcourt with no free throws
- The ruling official remains tableside. (Exception: center and trail when calling opposite will go opposite.)
 - When the ruling official is the lead, See Diagram 5-35, 5-36.
 - When the ruling official is the center, See Diagram 5-37, 5-38.
 - When the ruling official is the trail, See Diagram 5-39, 5-40.

DIAGRAM 5-35
LEAD CALLS FOUL - OPPOSITE
NO FREE THROWS



DIAGRAM 5-36
LEAD CALLS FOUL - TABLESIDE
NO FREE THROWS

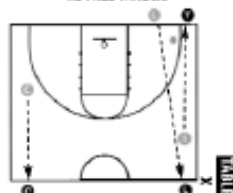


DIAGRAM 5-37
CENTER CALLS FOUL - TABLESIDE
NO FREE THROWS



DIAGRAM 5-38
CENTER CALLS FOUL - OPPOSITE
NO FREE THROWS



DIAGRAM 5-39
TRAIL CALLS FOUL - OPPOSITE
NO FREE THROWS



DIAGRAM 5-40
TRAIL CALLS FOUL - TABLESIDE
NO FREE THROWS



- When the table side Center makes a ruling in which the ball will be taken out of bounds opposite the table staying in the frontcourt. This should be a rare situation, as this would likely be outside the Center's PCA.
 - The ruling official has the option of going opposite the table to avoid a confrontational situation with coach/bench. I.e., after a technical foul on the coach, a disqualifying foul or if an adversarial situation could occur.
- F. False/Double Fouls:**
- After a double foul or a false double foul, the ruling official should go to the table to see that the fouls are properly charged.
 - No free throws are awarded for a double personal foul, a double tech-